



Milestones

CANTERBURY DHB ISSUE 9 FEBRUARY 2002



Christchurch hospital maintenance manager, Alan Beuzenberg (left) looks over the river protection plans with Christchurch Hospital, chief of medicine, Dr Kelvin Lynn, and deputy director of nursing, Sue Hayward, "While it is nice for patients and staff to have their hospital located next to a river in a garden setting we need to be aware of the potential risk the river could pose" Kelvin Lynn said. "The protection works will be an asset to the hospital and I ask that those staff who use the Nurse's Lawn be patient during the construction process," Sue Hayward said.

Flood protection at Christchurch Hospital

Flood protection works, soon to begin at Christchurch Hospital, will improve the Nurse's Lawn area opposite Riverside.

The protection works will see stopbanks created along the north of the Riverside Building to prevent a flood of the Avon River / Otakaro with a 1 in 200 year return period.

The works will protect the hospital from major flooding of the Avon River, says Christchurch Hospital maintenance manager, Alan Beuzenberg.

The \$64,000 project is being carried out with the Christchurch City Council, which is meeting half the costs.

A landscape architect and river planning engineer from the council have worked with clinical and engineering staff from Christchurch Hospital on the plans.

"The nurse's lawn will be redeveloped to enhance its look and feel and create an

amphitheatre affect," Christchurch City Council landscape architect, Dennis Preston, said.

"We have tried to create a more enclosed feel and have designed the stop banks to have a gentle slope to allow people to lounge on them."

"We will add additional plantings which will incorporate existing gardens and all access paths will be wheelchair accessible," he said.

"The council wants to improve the linkage between the botanic gardens and the hospital grounds and this project is an ideal opportunity to begin that process."

There will be some disruption to staff using the lawn during the works, however, other parts of the Nurse's Lawn will remain available.

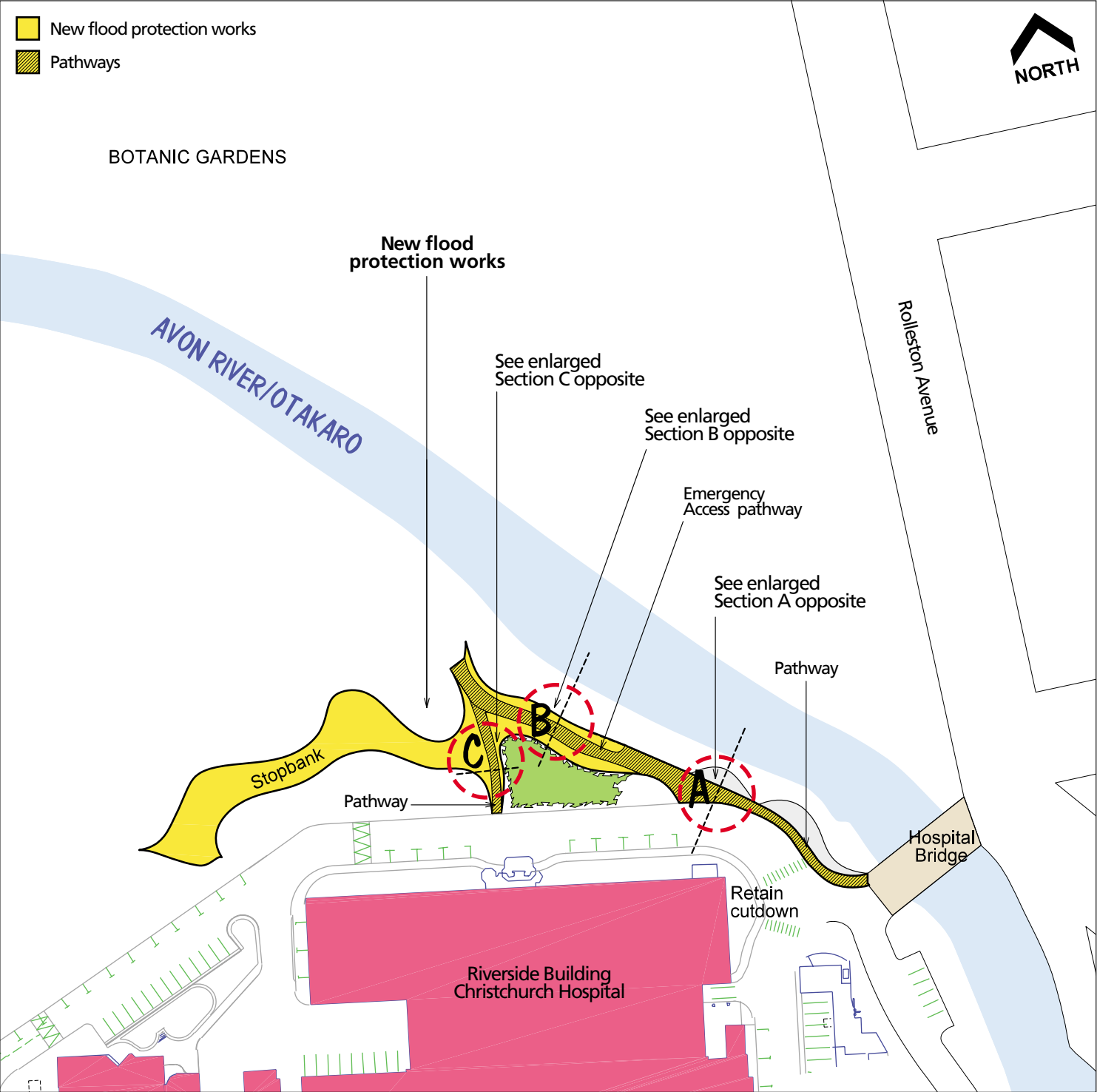
The work, which is expected to take four weeks to complete, will begin on February 11.

'Milestones'

is a newsletter focusing on the many changes occurring on, and planned for, Canterbury DHB sites. It is issued to provide an overview and update of developments.



Site plan showing the new stopbanks





Colourful restorations

Vivid and cheerful colours are being used in a make over of Ward 21 , Paediatrics, at Christchurch Hospital. Renovations began on January 7 and will be completed at the end of February. Paediatric patient care manager, Marg Willcox, said the renovations would make the ward more pleasant for both patients and staff.

The refurbishment will see new vinyls in the corridors and most rooms and new wall coverings throughout the ward.

The floor coverings feature colourful patterns of rainbows and stars to give the wards a cheerful,

happy feel. Fourteen different coloured vinyl coverings have been chosen.

Other work includes enlarging the doors of the smaller rooms so they are wide enough for hospital beds to fit through and creating a work-space, separate to the nurse's station, for the ward clerk.

The ward has been emptied to allow the work to take place – taking advantage of lower summer occupancy rates.

We will have pictures of the renovated ward in our next edition of Milestones.

Canterbury DHB

District Health Board

Te Poari Hauora o Waitaha



The builders' foreman, Barry Allport, and Christchurch Hospital building maintenance supervisor, Gary Busch, discuss the renovations programme.